

# Gigarailer



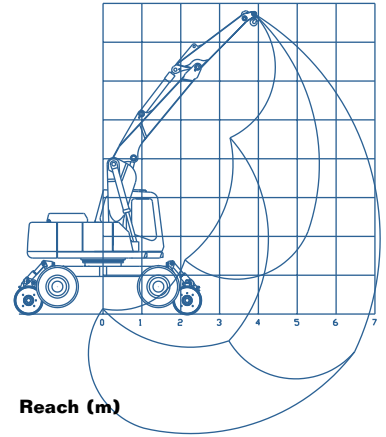
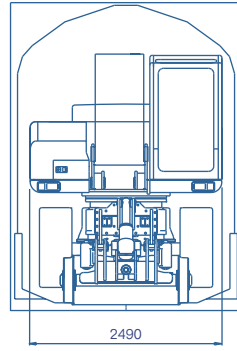
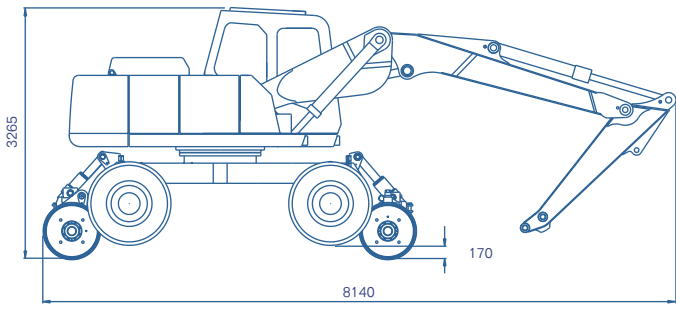
The Gigarailer is the new industry heavyweight and Rexquote's most powerful machine to date. At the forefront of technology in regards to lifting, digging, safety and overall quality, Gigarailer is based on a specially manufactured base machine dedicated for this application. Weighing a formidable 28 tonnes, it is fitted with heavy duty road and rail axles, chassis and counterweight, and special Rexquote designed and built front end equipment.

## Specifications

Overall length .....	8.14 m
Width .....	2.49 m
Weight.....	29,300 kg
Tailswing.....	1.995 m
Height – on rail wheels .....	3.265 m
Height – on road wheels .....	3.095 m
Slew rotation.....	±360°
Maximum travel speed.....	22 km/h
Maximum rail cant – travelling .....	200 mm (8°)
Maximum rail cant – working.....	150 mm (6°)
Maximum rail gradient.....	1 in 29
Minimum curve radius .....	42 m
Rail wheel diameter .....	680 mm
Towing capacity (non service braked).....	max 40,000 kg
Trailer park brake release pressure (hydraulic) .....	35 bar

## Features and Benefits

- Soft foam-fill tyres are puncture resistant and add weight and stability to the machine.
- Full attachment interchangeability between the Gigarailer and the current market best sellers.
- Available with one or two man cab.
- Equipped to tow a maximum of 40 tonnes with either hydraulic or air braking as an option.
- Base machine completely unique and built specially for Rexquote.
- The light-weight front end equipment has been engineered to enable superior lifting whilst maintaining the best possible digging ability.
- The advanced Rexwatch graphic display unit gives the driver the confidence to carry out the big lifts. Sensors mounted on the chassis, boom and dipper communicate the machine's position and configuration to the RCI; the correct duties are automatically selected and give the driver 'real time' load charts on screen.
- Programmable swing and height limiter. The true height limiting feature detects the machine's highest point and operates motion control accordingly.



**Transport dimensions (mm) – Terex Gigarailer**

**Reach (m)**

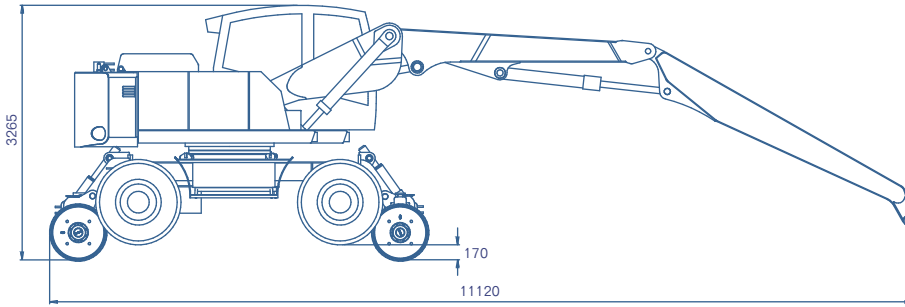
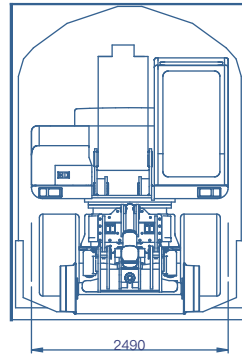
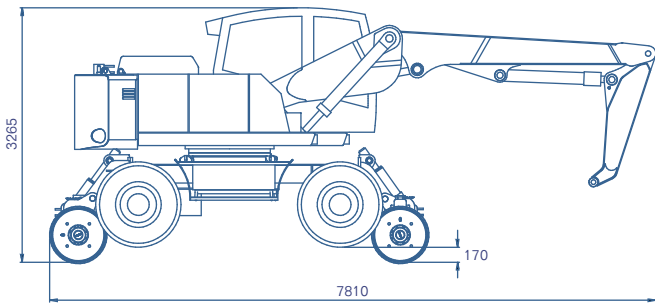


# Gigarailer 12

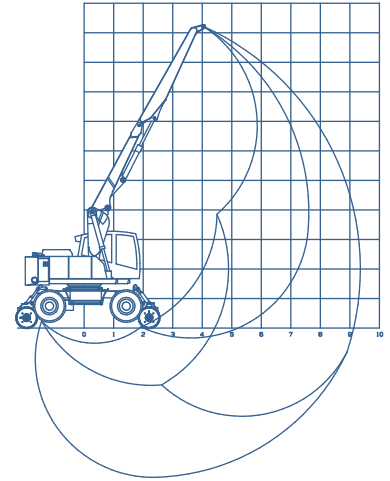
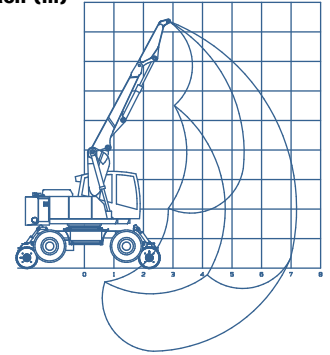
Gigarailer 12 is the latest development in the Rexquote product range. This machine is supplied with two interchangeable arms, a 1.8 metre crane arm for high-power lifting such as 60 foot concrete panels and a 4 metre crane arm for erecting gantries with a reach of up to 10 metres. Based on a standard Gigarailer machine, the boom arrangement is interchangeable.



**Transport dimensions (mm) – Gigarailer 12**



**Reach (m)**



**Features and Benefits**

- Soft foam-fill tyres are puncture resistant and add weight and stability to the machine.
- Available with one or two man cab.
- Equipped to tow up to 40 tonnes of unbraked trailers with hydraulic park brakes or the option of air braking.
- Base machine completely unique and built to Rexquote specifications for road-rail.
- 4 metre crane arm with a reach of up to 10 metres.
- 1.8 metre crane arm for high power lifting.
- Machine RCI calibrated for both arms to allow automatic duty selection with either arm fitted.

**Specifications**

Overall Length .....	7.81 m
Width .....	2.49 m
Weight – 4 m crane arm.....	29,300 kg
Tailswing.....	1.995 m
Height – on rail wheels .....	3.265 m
Height – on road wheels .....	3.095 m
Slew rotation.....	±360°
Maximum Travel Speed .....	22 km/h
Maximum rail cant – travelling .....	200 mm (8°)
Maximum rail cant – working.....	150 mm (6°)
Maximum rail gradient.....	1 in 29
Minimum curve radius .....	42 m
Rail wheel diameter .....	680 mm
Towing capacity (non service braked).....	max 40,000 kg
Trailer park brake release pressure (hydraulic) .....	35 bar

